

Spyder[®]5 ELITE⁺

QUICK START GUIDE

What You Get

- Spyder5ELITE+ download instructions
- Serial Number

System Requirements

- Windows 7 32/64, Windows 8.0, 8.1 32/64, 10 32/64
- Mac OS X 10.7, 10.8, 10.9, 10.10, 10.11
- Monitor Resolution 1280x768 or greater, 16-bit video card (24 recommended), 1GB of available RAM, 500MB of available hard disk space.
- Internet connection for software download

Support

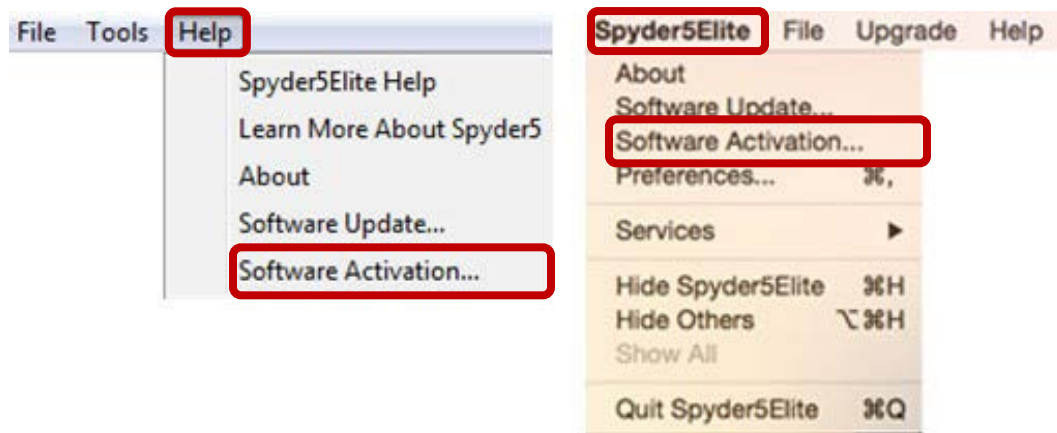
support.datacolor.com

Install & Activate

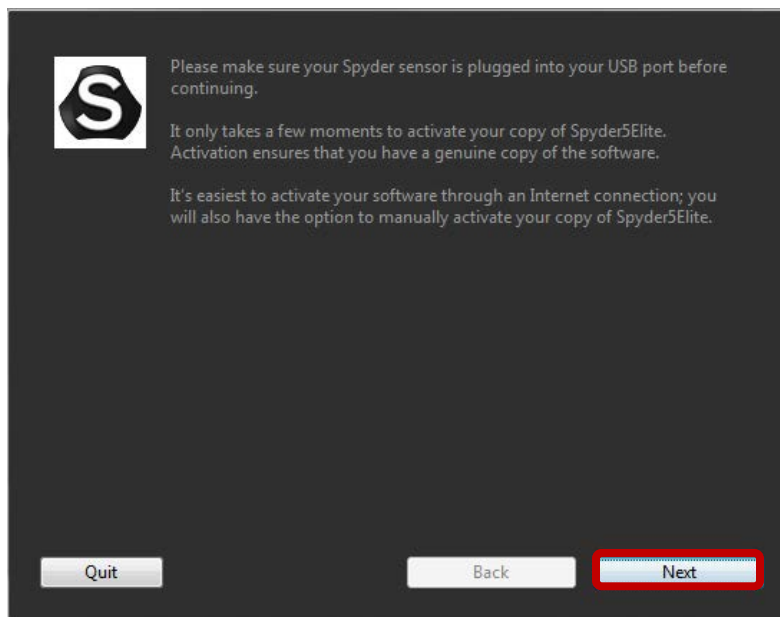
Install the Spyder5ELITE+ software from the [Datacolor Website](#). After the installation is complete, launch the software to begin the activation and registration process.

Note: If you are a Spyder5ELITE user upgrading to Spyder5ELITE+, start from step 1. If you are a Spyder5EXPRESS or Spyder5PRO user upgrading to Spyder5ELITE+, start from step 2.

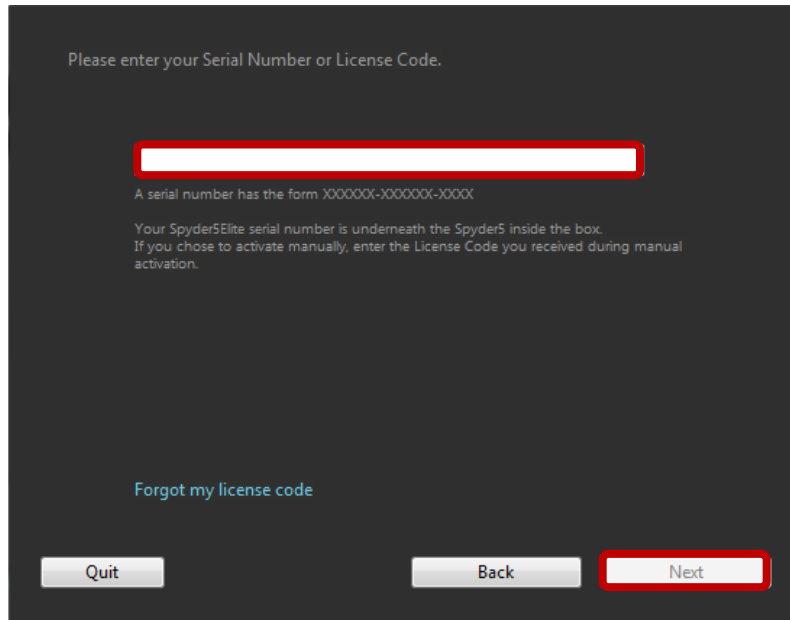
1. Go to the “Help” (Windows) or “Spyder5ELITE” (Mac) menu and select “Software Activation...”



2. Plug your Spyder5 sensor into your USB port. Click “Next”.



3. Use the Serial Number included in your Spyder5ELITE+ email to activate your software. This will automatically start your Warranty.



Please enter your Serial Number or License Code.

A serial number has the form XXXXXX-XXXXXX-XXXX

Your Spyder5Elite serial number is underneath the Spyder5 inside the box.
If you chose to activate manually, enter the License Code you received during manual activation.

[Forgot my license code](#)

You now have the features included in your Spyder5ELITE+ software!

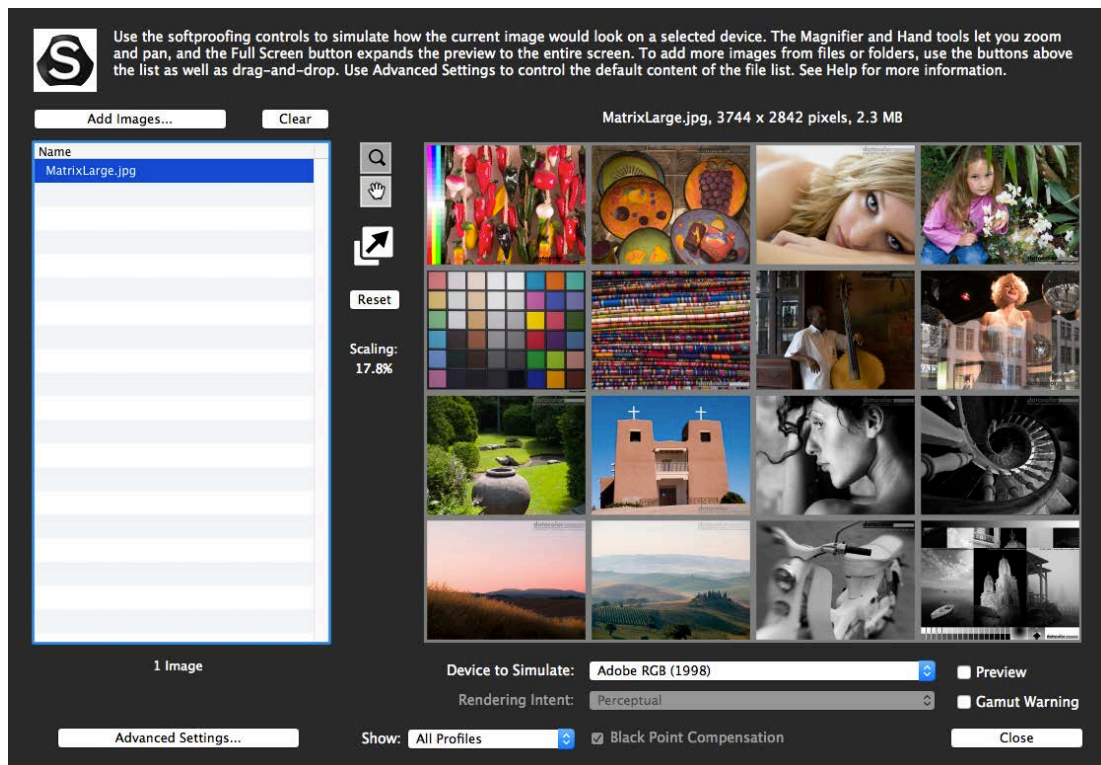
You now have the following new features:

SoftProofing/Device Simulation

Improve “Screen-to-Print” matching with this new workflow of tools to simulate how your photos will look on any printer or device – including home printers, online or retail printers, and certain mobile/tablet devices.

Steps to Use:

1. Launch software and select “Printer SoftProofing and Mobile/Tablet Simulation” on the “Welcome” screen.
2. If you are using a home printer, you may already have ICC profiles installed in your computer. If you don’t and would like to profile your printer, we recommend using our SpyderPRINT product.
3. If you want to SoftProof for a retail or online print provider, go to and search their website for ICC printer profiles to download. Then click “Install Profiles...” in the lower left corner if needed.
4. If you want to simulate a mobile/tablet device or other common profiles, we provide an optional step to install sample profiles. (This selection will appear after the next step.)
5. Click “SoftProof” in the lower right corner to open the SoftProof screen.
6. Add JPEG/TIFF image files/folders to the preview list to simulate printer/device output.
7. Select a profile from the dropdown list at the bottom of the screen to simulate a selected image.



Automatic Room Light Switching

Ensure your work on-screen is correct for viewing and editing by automatically, and silently, switching your monitor profile during normal operation based on changing room light conditions without the need to re-calibrate your monitor.

Steps to Use:

1. Launch software and begin a full calibration workflow.
2. Once you reach the “Calibration Settings” screen, click “Advanced Settings”.
3. Select “Room Light Switching – Automatic” from the “Room Light” dropdown list.
4. Perform the calibration as normal and follow the software prompts.

The screenshot displays the Spyder5 ELITE+ software interface. The top bar shows the product name and the Datacolor logo. The main window is titled "Advanced Calibration Settings". On the left, a sidebar lists navigation steps: Welcome, Select Workflow, Calibration, Choose Settings (selected), Place the Sensor, Save, View Calibration, and Overview. The main content area is divided into sections: "Choose advanced calibration options" with a "Choose Custom Target" dropdown set to "2.2-6500" and "Current Target Settings" (Gamma: 2.2, White Point: 6500K, Brightness: Do Not Adjust); "Room Light" with a dropdown menu where "Room Light Switching - Automatic" is selected and highlighted with a red box; and "Gray Balance Calibration" with a dropdown set to "Faster - Recommended". A right-hand panel titled "Interactive Help" provides text explaining the Room Light feature. At the bottom, there are buttons for "Basic Settings", "Back", "Next", and a link "Click to learn more...".

Once the calibration is complete, your new profiles are created and activated. ****Please remember:** you must have the Spyder5 sensor attached via USB to your computer in order for it to take measurements and adjust your screen automatically as room light conditions change.

Updated StudioMatch

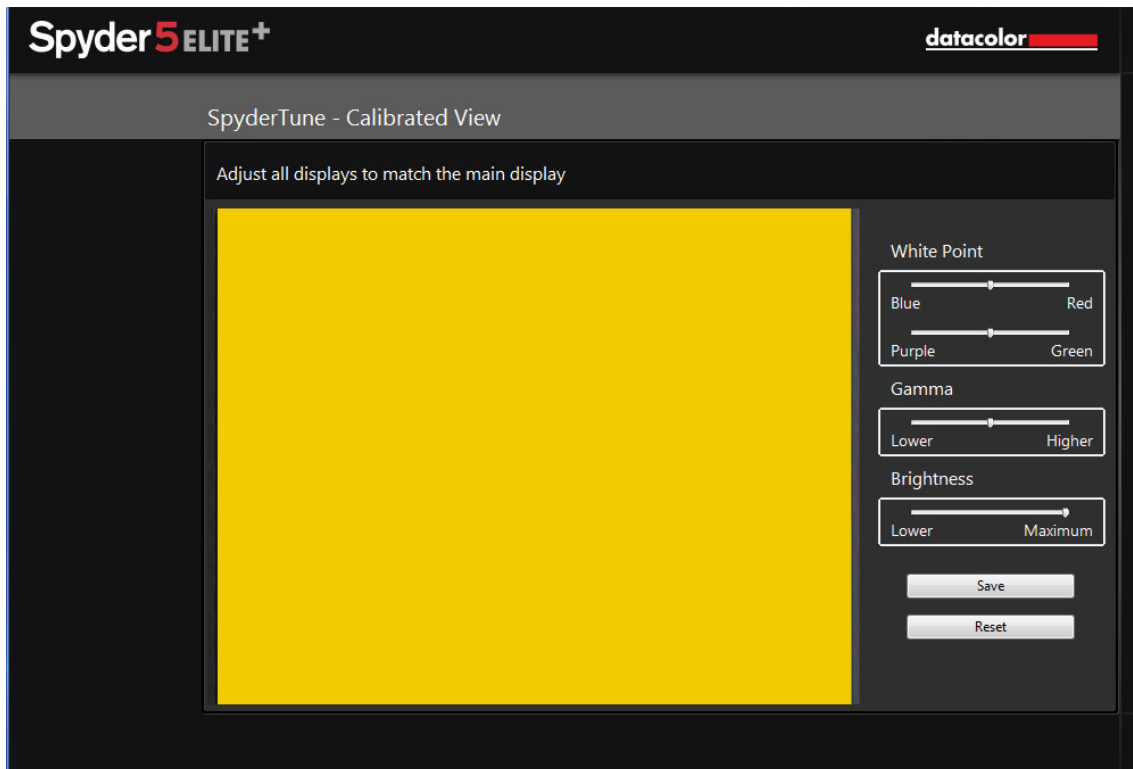
Ensure more precise monitor matching and take the guess work out of making all your connected displays look alike. It includes a new visual verification step that assists you by fine tuning your results for brightness, white point, and gamma. These controls give you the ultimate flexibility to make each of your monitors match.

Steps to Use:

1. Launch software and select “StudioMatch” from the “Shortcuts” dropdown list in the lower left corner.
2. Follow the prompts to select the displays you want to match.
3. Increase your displays’ brightness level to maximum (if possible) then measure.
4. Next, take a room light measurement.
5. Select your calibration settings then proceed with a full calibration for the displays.

****Note:** Please deactivate any Auto Brightness features and stand by your displays to make brightness adjustments (if possible) when prompted.

6. Adjust displays to match the main monitor as you see fit for the 4 patches:



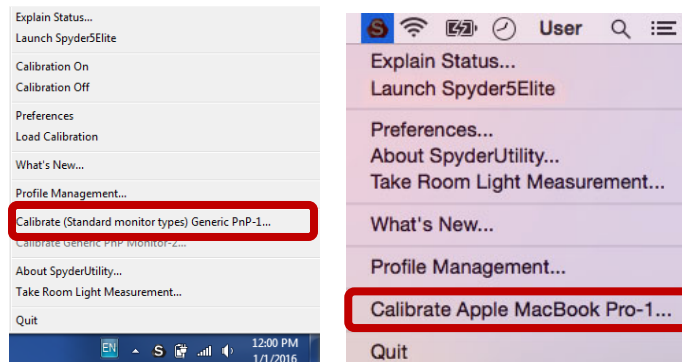
7. Use SpyderProof to evaluate your before and after results.

1-Click Calibration

Build on the speed of the current Spyder5 calibration process by making re-calibration even faster and simpler than ever.

Steps to Use:

1. Click on the SpyderUtility icon in the menu bar/system tray.
2. Select the monitor you would like to calibrate.
3. Complete the calibration process as you would normally.



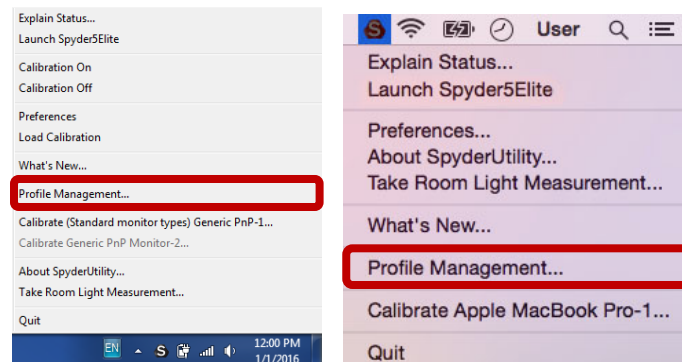
****Note:** 1-Click Calibration is only available for your monitor(s) after you have completed a full calibration in the software.

Profile Management Tool

Have complete monitor profile flexibility and control with this tool that allows you to turn off, switch, delete, and rename existing profiles.

Steps to Use:

1. Click on the SpyderUtility icon in the menu bar/system tray.
2. Select “Profile Management...”.



Datacolor, Spyder and Spyder5 are trademarks or registered trademarks of Datacolor.

© Copyright 2016 Datacolor. All rights reserved.