

# Spyder<sup>®</sup>5 PRO<sup>+</sup>

## QUICK START GUIDE

### What You Get

- Spyder5PRO+ download instructions
- Serial Number

### System Requirements

- Windows 7 32/64, Windows 8.0, 8.1 32/64, 10 32/64
- Mac OS X 10.7, 10.8, 10.9, 10.10, 10.11
- Monitor Resolution 1280x768 or greater, 16-bit video card (24 recommended), 1GB of available RAM, 500MB of available hard disk space.
- Internet connection for software download

### Support

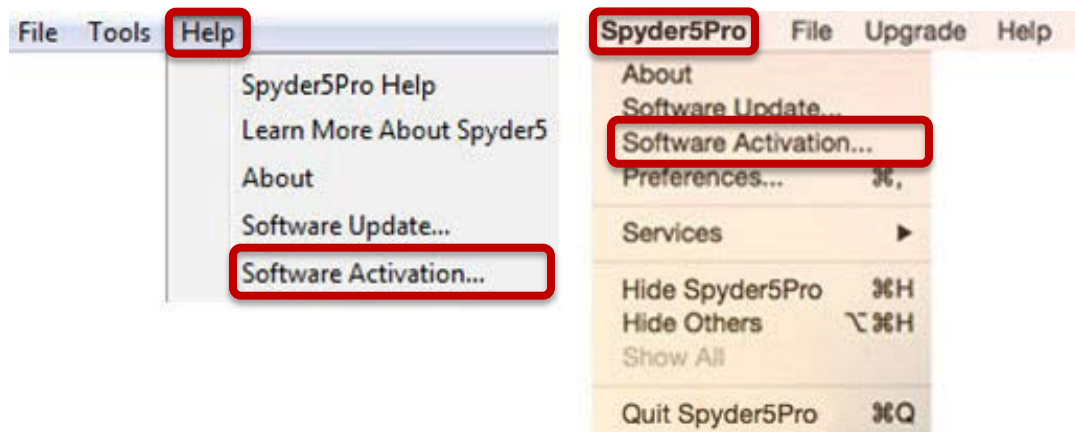
[support.datacolor.com](http://support.datacolor.com)

## Install & Activate

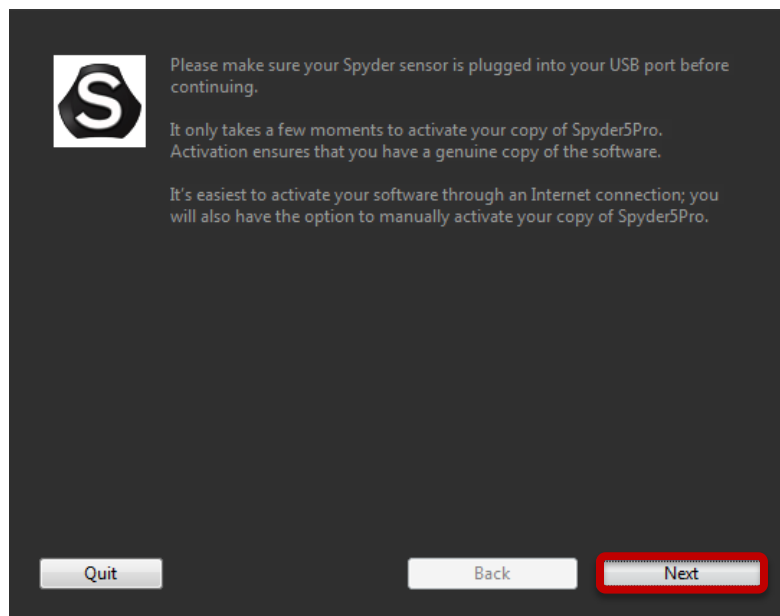
Install the Spyder5PRO+ software from the [Datacolor Website](#). After the installation is complete, launch the software to begin the activation and registration process.

**Note:** If you are a Spyder5PRO user upgrading to Spyder5PRO+, start from step 1. If you are a Spyder5EXPRESS user upgrading to Spyder5PRO+, start from step 2.

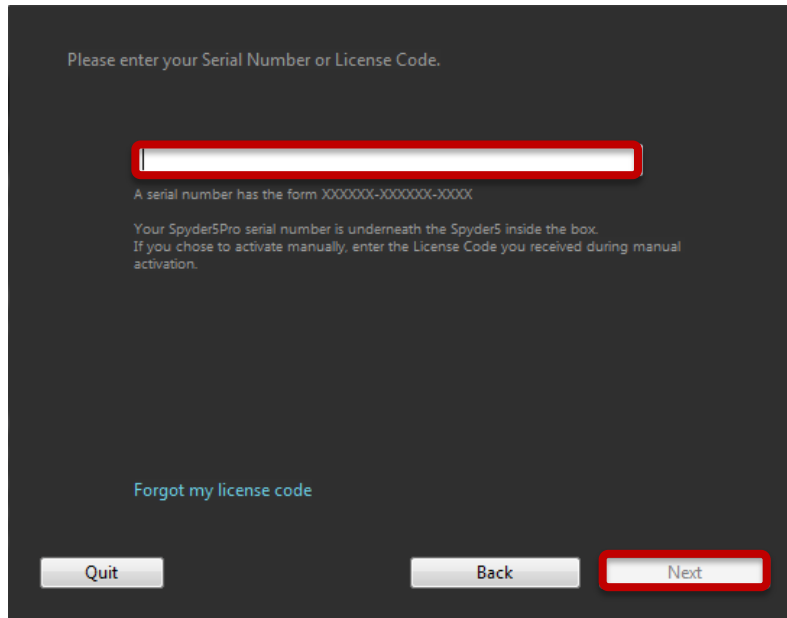
1. Go to the “Help” (Windows) or “Spyder5PRO” (Mac) menu and select “Software Activation...”



2. Plug your Spyder5 sensor into your USB port. Click “Next”.



3. Use the Serial Number included in your Spyder5PRO+ email to activate your software. This will automatically start your Warranty.



Please enter your Serial Number or License Code.

A serial number has the form XXXXXX-XXXXXX-XXXX

Your Spyder5Pro serial number is underneath the Spyder5 inside the box.  
If you chose to activate manually, enter the License Code you received during manual activation.

[Forgot my license code](#)

You now have the features included in your Spyder5PRO+ software!

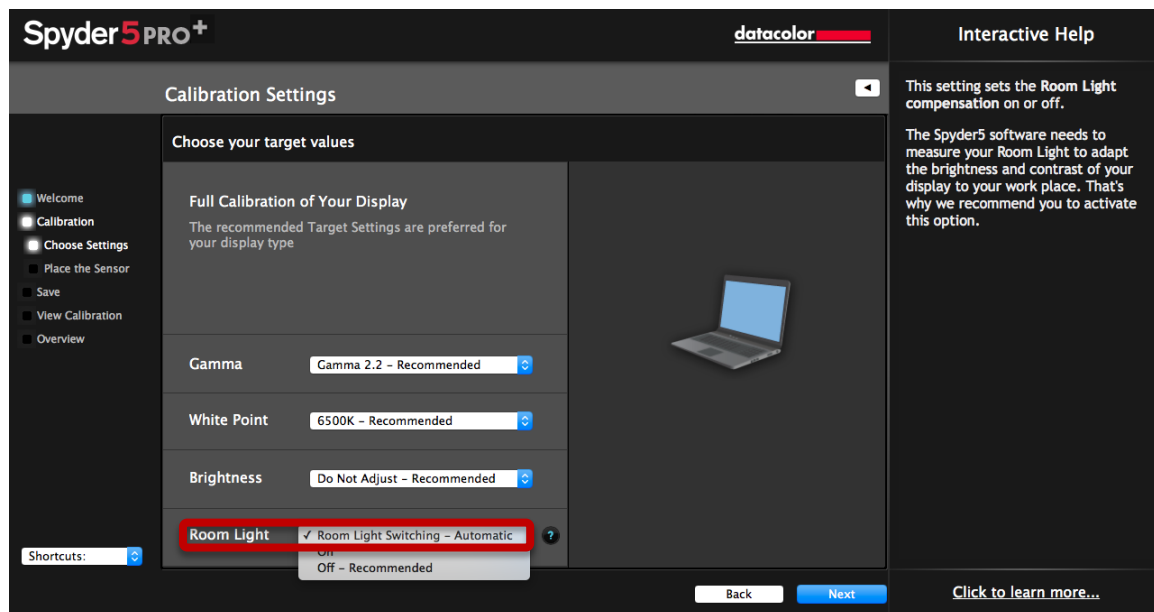
You now have the following new features:

### **Automatic Room Light Switching**

Ensure your work on-screen is correct for viewing and editing by automatically, and silently, switching your monitor profile during normal operation based on changing room light conditions without the need to re-calibrate your monitor.

Steps to Use:

1. Launch software and begin a full calibration workflow.
2. Once you reach the “Calibration Settings” screen, select “Room Light Switching – Automatic” from the “Room Light” dropdown list.
3. Perform the calibration as normal and follow the software prompts.



Once the calibration is complete, your new profiles are created and activated.

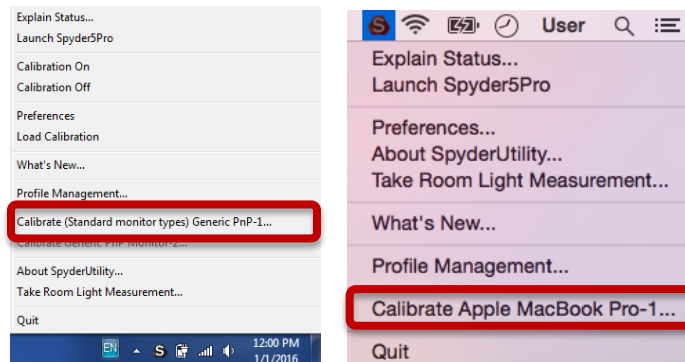
**\*\*Please remember:** you must have the Spyder5 sensor attached via USB to your computer in order for it to take measurements and adjust your screen automatically as room light conditions change.

## **1-Click Calibration**

Build on the speed of the current Spyder5 calibration process by making re-calibration even faster and simpler than ever.

Steps to Use:

1. Click on the SpyderUtility icon in the menu bar/system tray.
2. Select the monitor you would like to calibrate.
3. Complete the calibration process as you would normally.



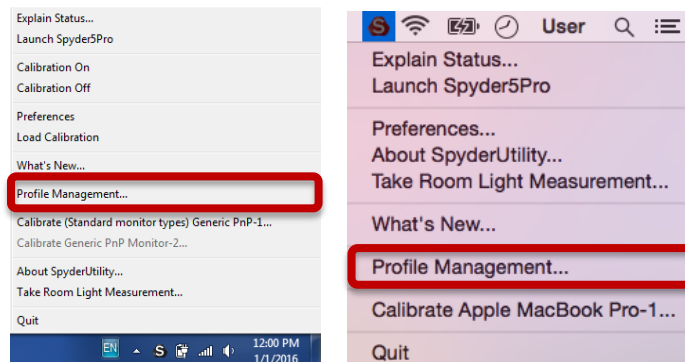
**\*\*Note:** 1-Click Calibration is only available for your monitor(s) after you have completed a full calibration in the software.

## **Profile Management Tool**

Have complete monitor profile flexibility and control with this tool that allows you to turn off, switch, delete, and rename existing profiles.

Steps to Use:

1. Click on the SpyderUtility icon in the menu bar/system tray.
2. Select "Profile Management..."



Datacolor, Spyder and Spyder5 are trademarks or registered trademarks of Datacolor.

© Copyright 2016 Datacolor. All rights reserved.